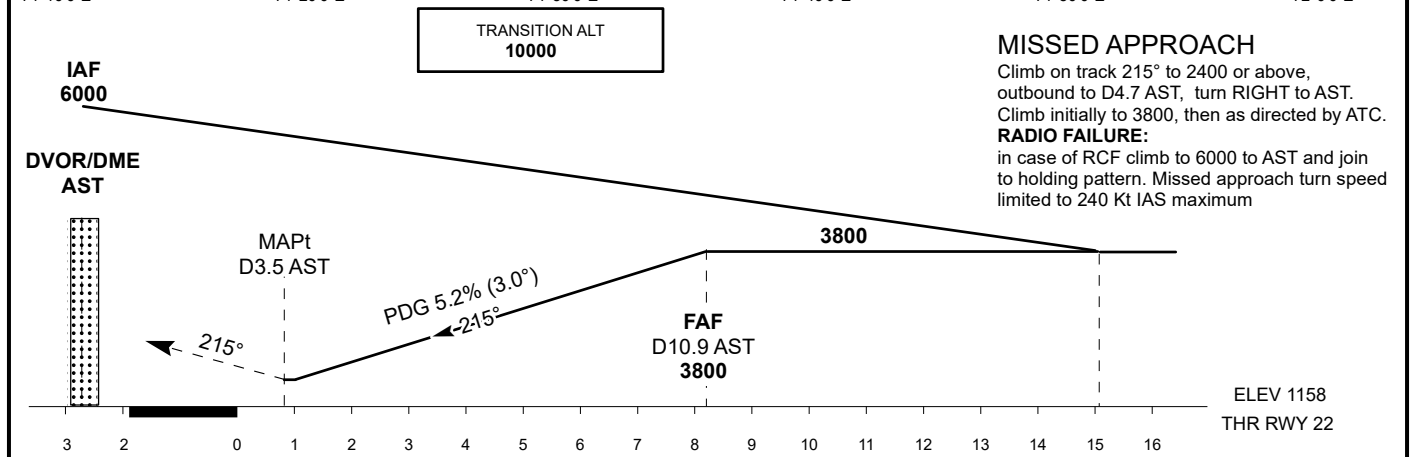
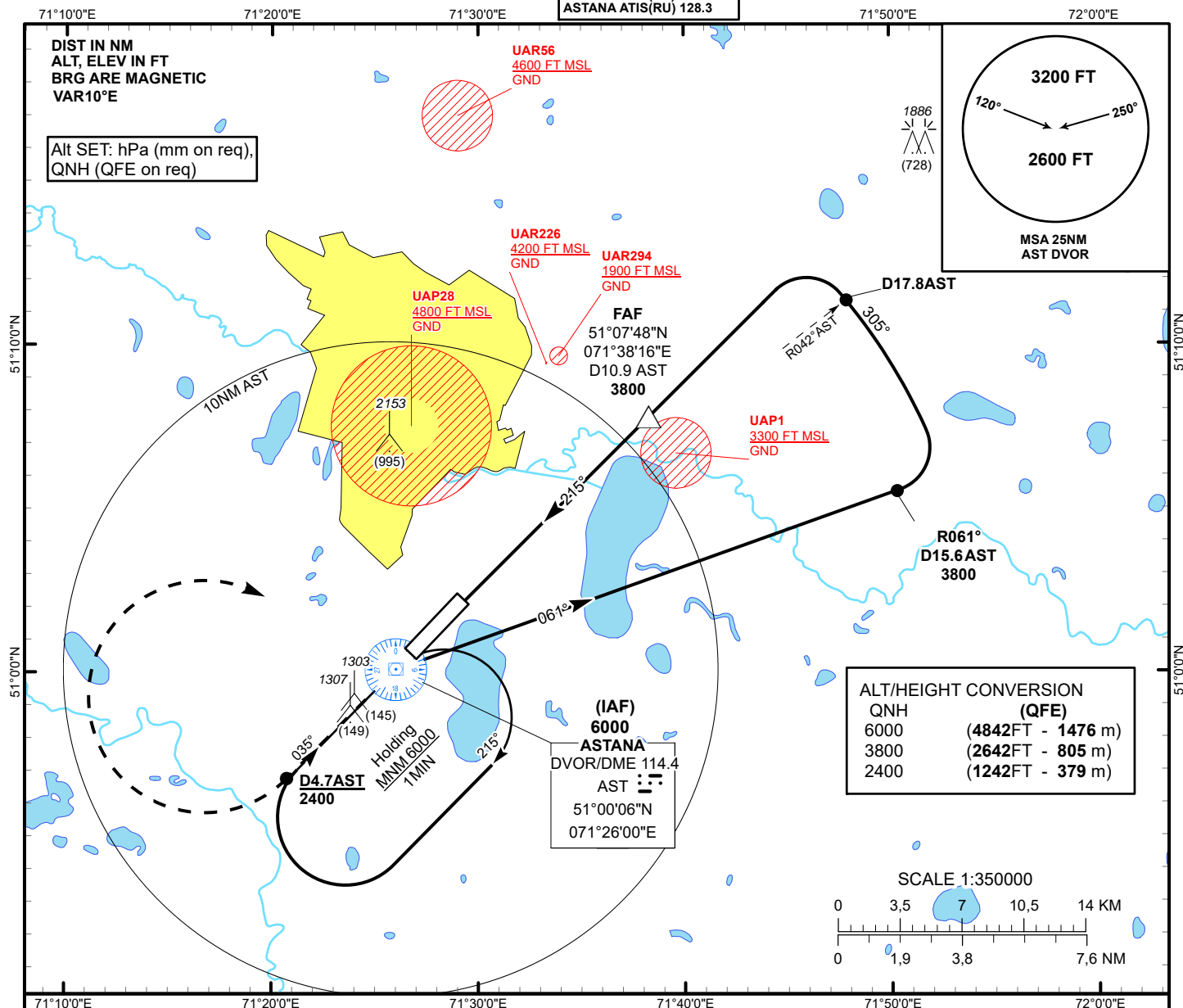


INSTRUMENT  
APPROACH  
CHART - ICAO

AERODROME ELEV **1166FT**  
HEIGHTS RELATED TO  
THR RWY 22 - ELEV **1158FT**

ASTANA TOWER 135.5  
ASTANA APPROACH 124.6  
ASTANA RADAR 120.7  
ASTANA GROUND 119.6  
ASTANA ATIS(EN) 129.5  
ASTANA ATIS(RU) 128.3

ASTANA/NURSULTAN NAZARBAYEV  
INTERNATIONAL AIRPORT  
VOR/DME RWY 22



Aircraft Category		A	B	C	D	THR	1.0	2.0	3.0	4.0	5.0	6.0	7.0	8.0	8.2
Straight-in Approach OCA/H						DME AST	3.7	4.7	5.7	6.7	7.7	8.7	9.7	10.7	10.9
	VOR/DME	1530(370)	1530(370)	1530(370)	1530(370)	ALTITUDE	1525	1844	2162	2481	2799	3117	3436	3754	3800
						HEIGHT	(367)	(686)	(1004)	(1323)	(1641)	(1959)	(2278)	(2596)	(2642)
Aerodrome Operating Minima MDH ft x RVR(CMV)	VOR/DME					GS	Kt	80	100	120	140	160	180		
						FAF-MAPt (7.4NM)	min:sec	5:33	4:26	3:42	3:10	2:47	2:28		
						Rate of descent(5.2%)	ft/min	420	530	630	740	840	950		

ASTANA  
VOR/DME

AERONAUTICAL DATA TABULATION

VOR approach to RWY22 from AST DVOR/DME	
Fix/point	Coordinates
AST DVOR/DME(IAF)	51° 00' 05.6"N 071° 26' 00.4"E
(FAF) D10.9 AST	51° 07' 47.8"N 071° 38' 16.0"E
THR RWY 22	51° 02' 01.65"N 071° 29' 01.44"E
Final approach descent angle is 3°	